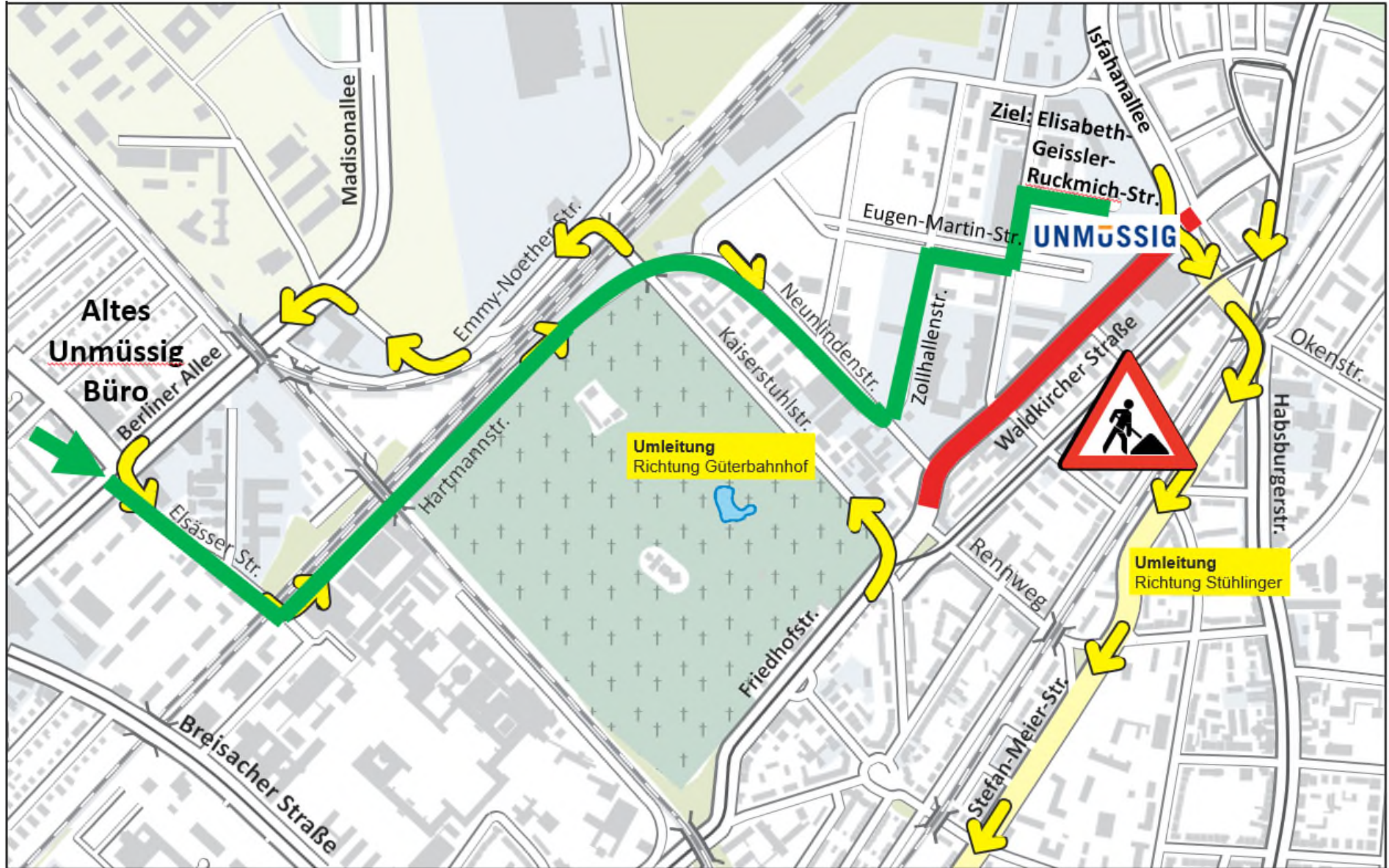


Anfahrtsskizze



Stadtbahn Waldkircher Straße

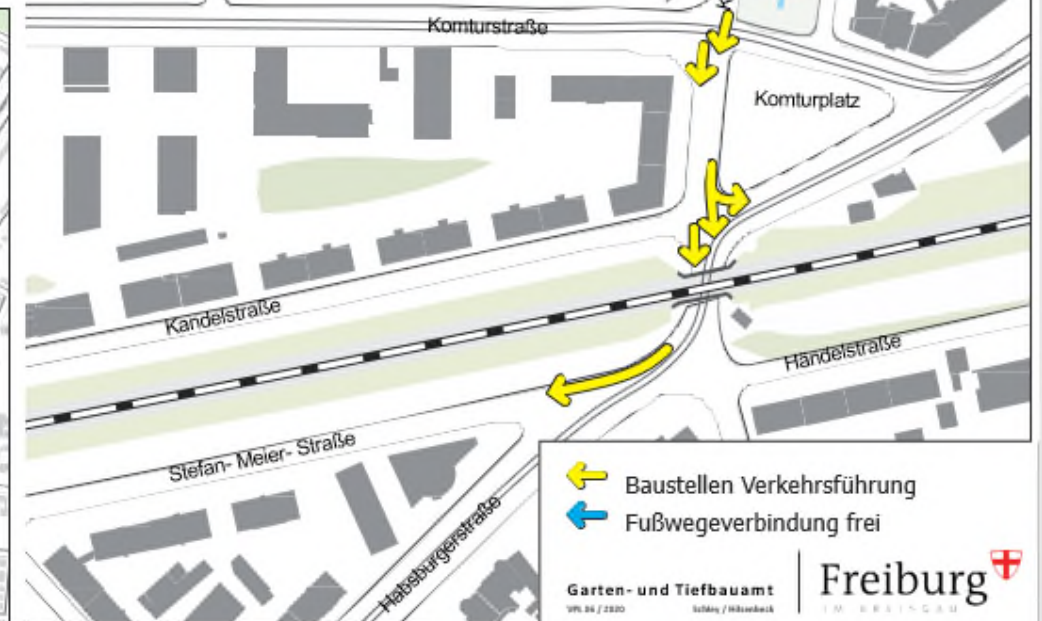
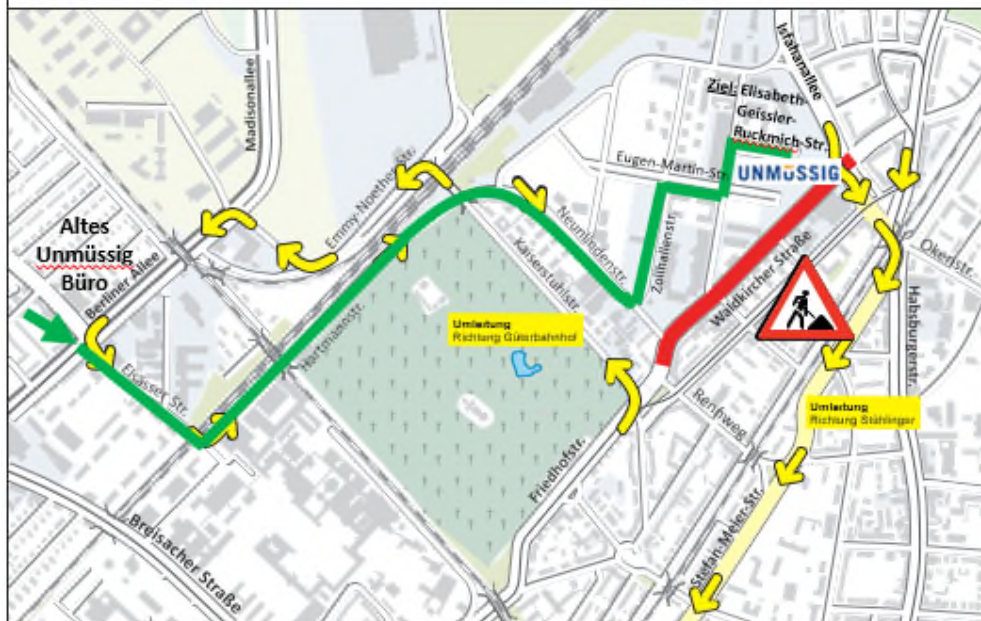
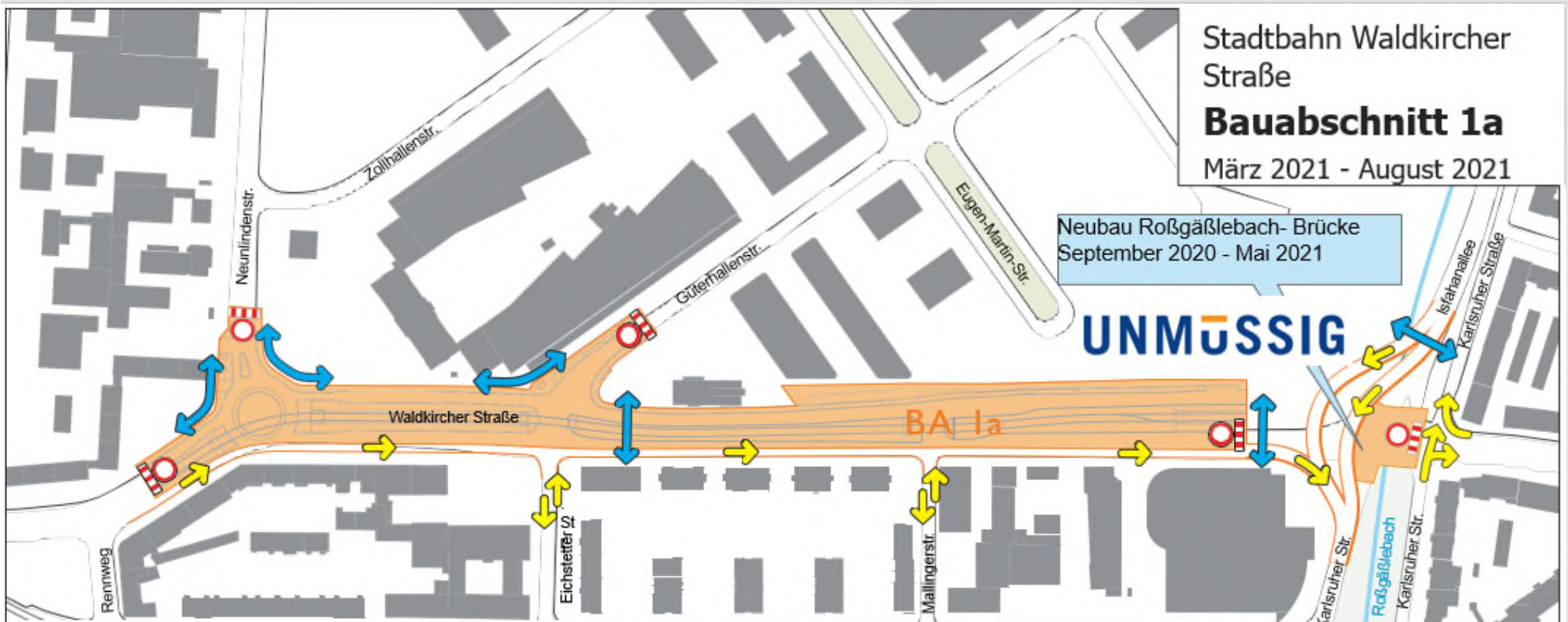
Bauabschnitt 1a

März 2021 - August 2021

Neubau Roßgäßlebach-Brücke
September 2020 - Mai 2021

UNMÜSSIG

BA 1a



- ← Baustellen Verkehrsführung
- ← Fußwegeverbindung frei